

06	05	04	03	02	01
07	08	09	10	11	12
18	17	16	15	14	13
19	20	21	22	23	24
30	29	28	27	26	25
31	32	33	34	35	36



# HUMBOLDT COUNTY

PT. SE1/4 SE1/4 SEC> 18 T.36N. R.38E.

## Sage Heights

NOTE: This plat is for assessment purposes only and does not represent a survey of the lands on this plat.

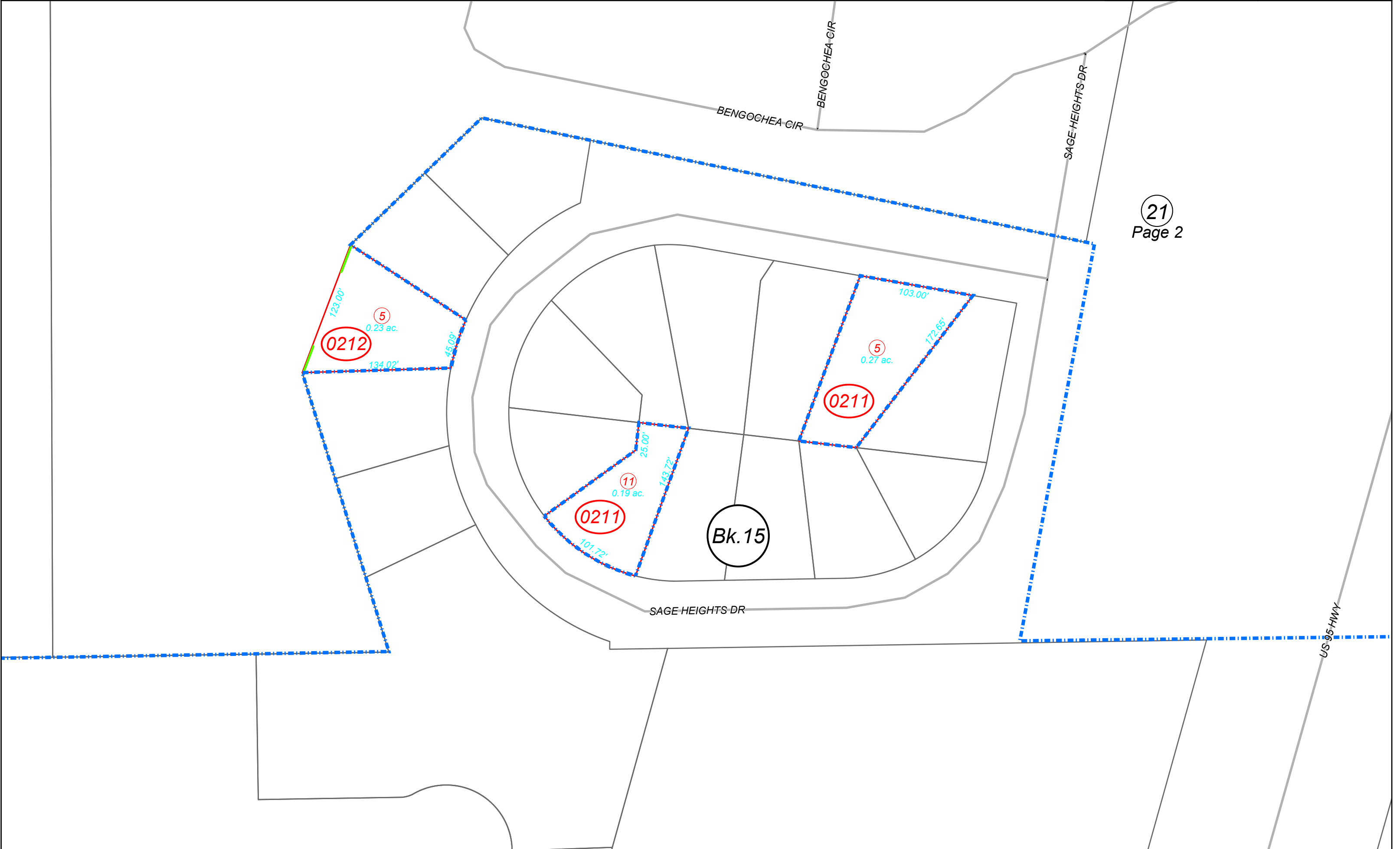


Map Prepared by:  
HUMBOLDT COUNTY ASSESSOR'S OFFICE  
WINNEMUCCA, NEVADA 89445

10-21  
Page 1 of 2

1"=75'  
M.D.B. & M.

36N38E



21  
Page 2