

# HUMBOLDT COUNTY

N1/2 SEC. 23 T.35N. R.37E.

Airport Residential Estates

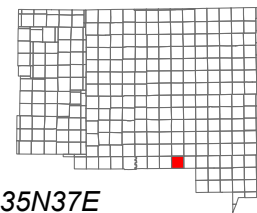
NOTE: This plat is for assessment purposes only and does not represent a survey of the lands on this plat.



Map Prepared by:  
HUMBOLDT COUNTY ASSESSOR'S OFFICE  
WINNEMUCCA, NEVADA 89445

# 14-8

1"=400'  
M.D.B. & M.



06	05	04	03	02	01
07	08	09	10	11	12
18	17	16	15	14	13
19	20	21	22	23	24
30	29	28	27	26	25
31	32	33	34	35	36

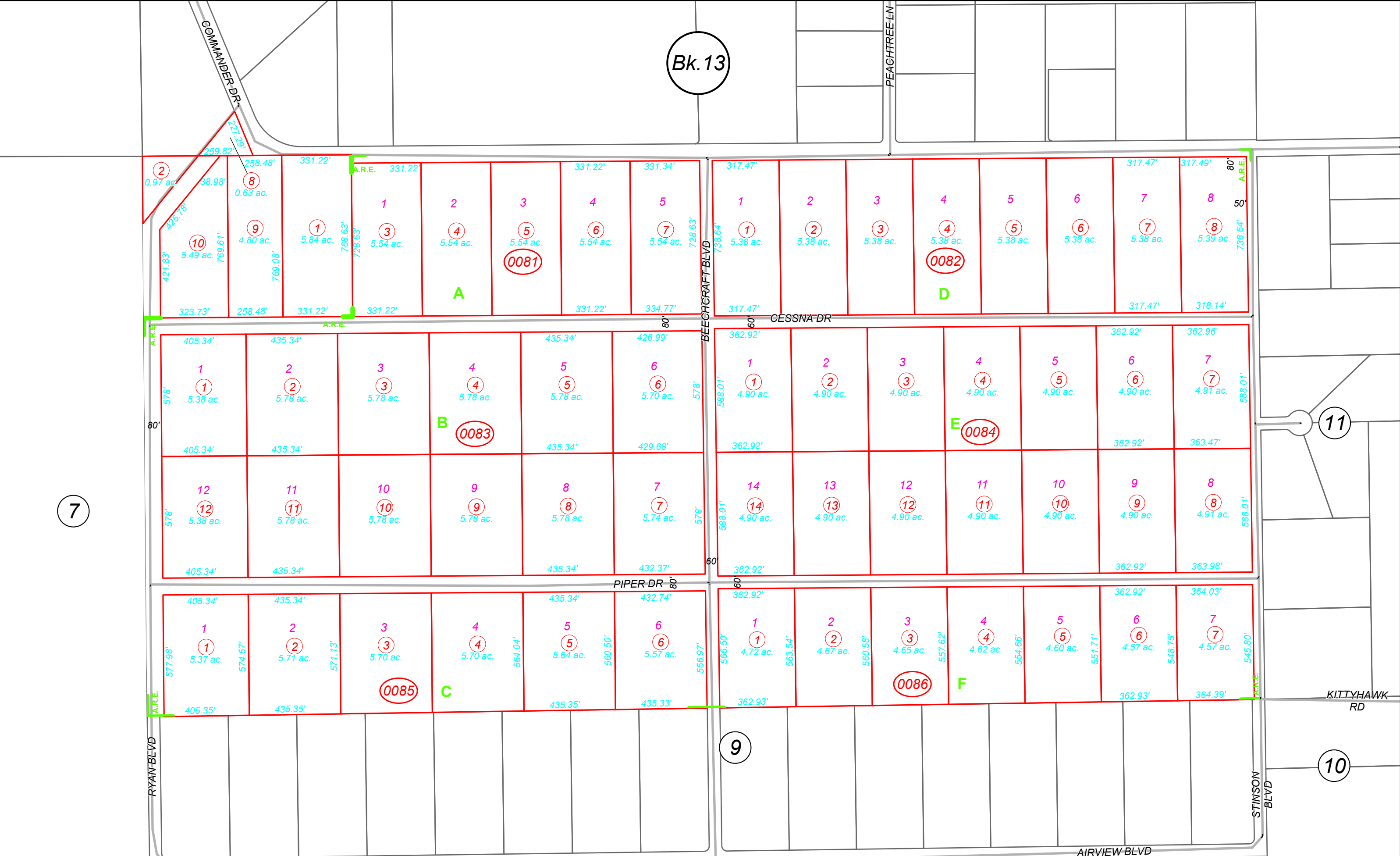


35N37E

Bk. 13

PEACHTREE LN

COMMANDER DR



7

9

11

10