

HUMBOLDT COUNTY

S1/2 SEC. 25 T.35N. R.37E.

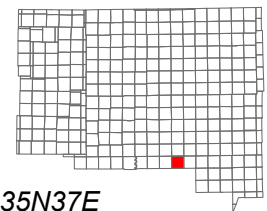
NOTE: This plat is for assessment purposes only and does not represent a survey of the lands on this plat.



Map Prepared by:  
HUMBOLDT COUNTY ASSESSOR'S OFFICE  
WINNEMUCCA, NEVADA 89445

14-15

1"=400'  
M.D.B. & M.



06	05	04	03	02	01
07	08	09	10	11	12
18	17	16	15	14	13
19	20	21	22	23	24
30	29	28	27	26	25
31	32	33	34	35	36



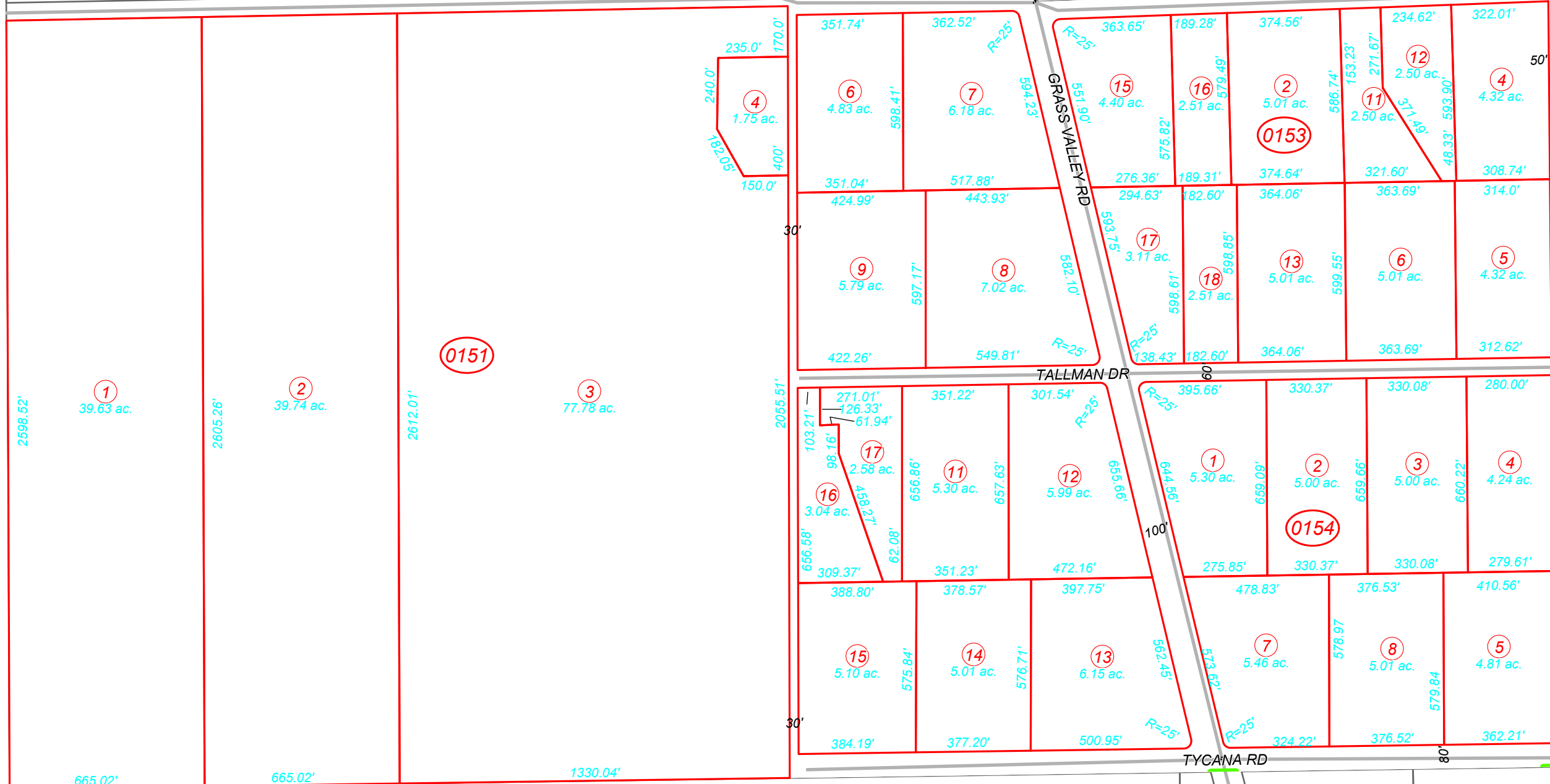
35N37E

14

DONALD LN

16

Bk. 10



TALLMAN DR

TYCANA RD

GERMAIN DR

34