

06	05	04	03	02	01
07	08	09	10	11	12
18	17	16	15	14	13
19	20	21	22	23	24
30	29	28	27	26	25
31	32	33	34	35	36



HUMBOLDT COUNTY
 PT. SE1/4 SE1/4 SEC. 18 T.36N. R.38E.
 Sage Heights
 NOTE: This plat is for assessment purposes only
 and does not represent a survey of the lands on this plat.

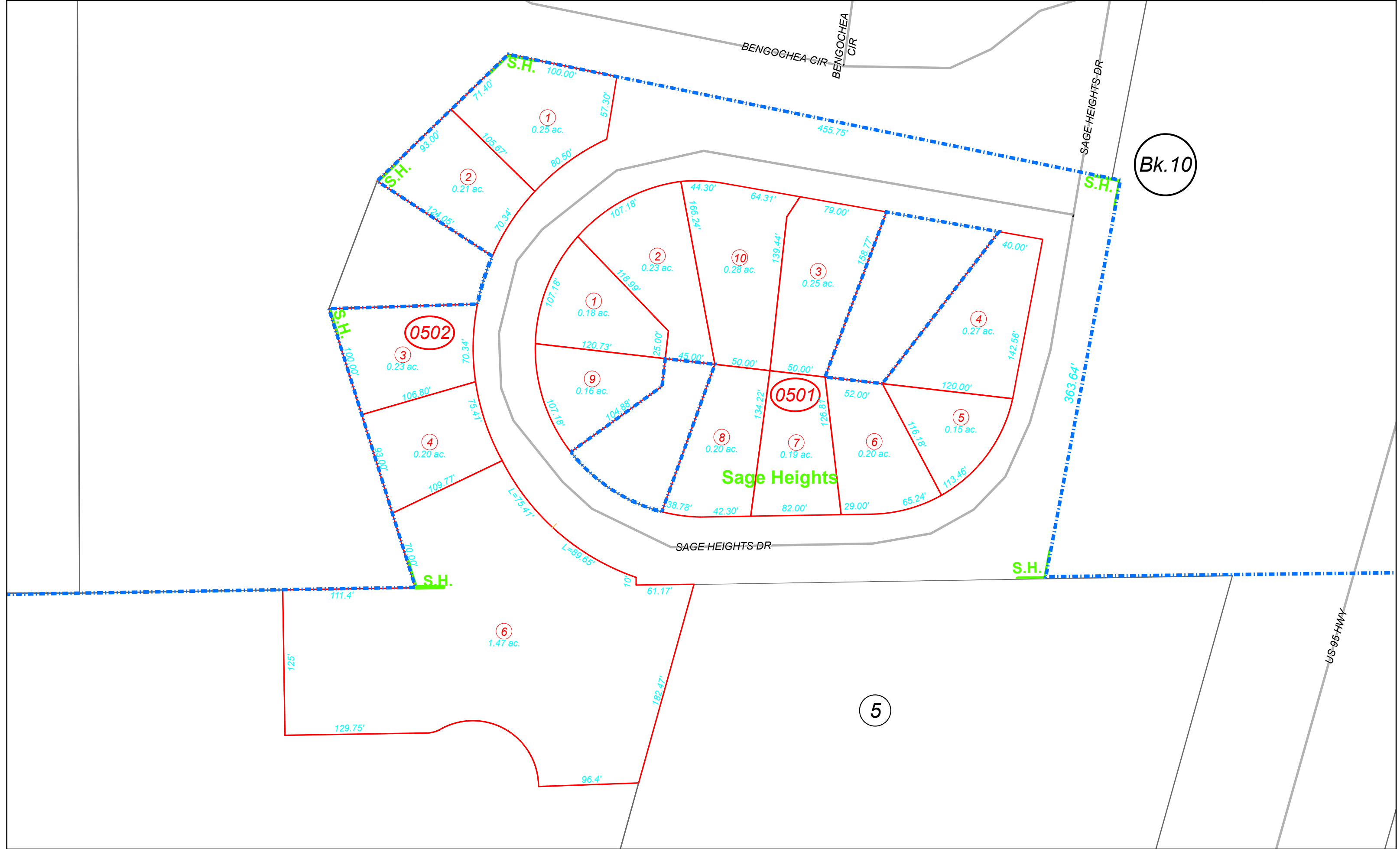


Map Prepared by:
 HUMBOLDT COUNTY ASSESSOR'S OFFICE
 WINNEMUCCA, NEVADA 89445

15-50

1"=75'
 M.D.B. & M.

36N38E



Bk. 10

5

US 95 HWY