

HUMBOLDT COUNTY

T.36N. R.29E.

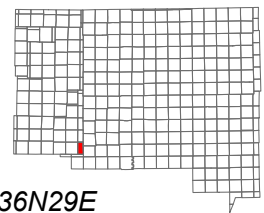
NOTE: This plat is for assessment purposes only and does not represent a survey of the lands on this plat.



Map Prepared by:
HUMBOLDT COUNTY ASSESSOR'S OFFICE
WINNEMUCCA, NEVADA 89445

17-55

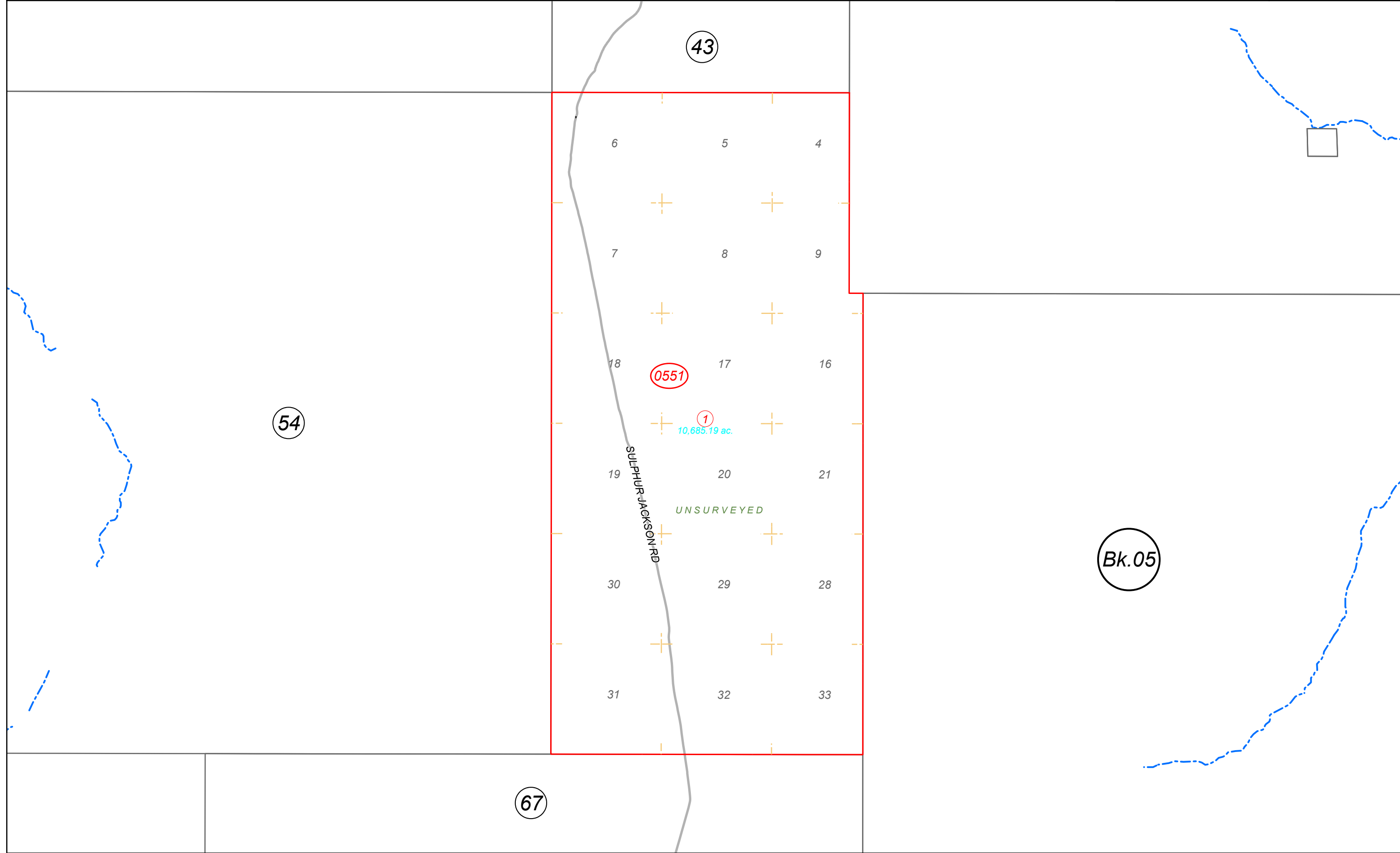
1"=4,000'
M.D.B. & M.



06	05	04	03	02	01
07	08	09	10	11	12
18	17	16	15	14	13
19	20	21	22	23	24
30	29	28	27	26	25
31	32	33	34	35	36



36N29E



43

54

67

6

5

4

7

8

9

18

0551

17

16

19

1
10,685.19 ac.

20

21

UNSURVEYED

30

29

28

31

32

33

Bk.05

