

06	05	04	03	02	01
07	08	09	10	11	12
18	17	16	15	14	13
19	20	21	22	23	24
30	29	28	27	26	25
31	32	33	34	35	36



HUMBOLDT COUNTY
SE1/4 SE1/4 SEC. 2 T.41N. R.39E.

NOTE: This plat is for assessment purposes only
and does not represent a survey of the lands on this plat.

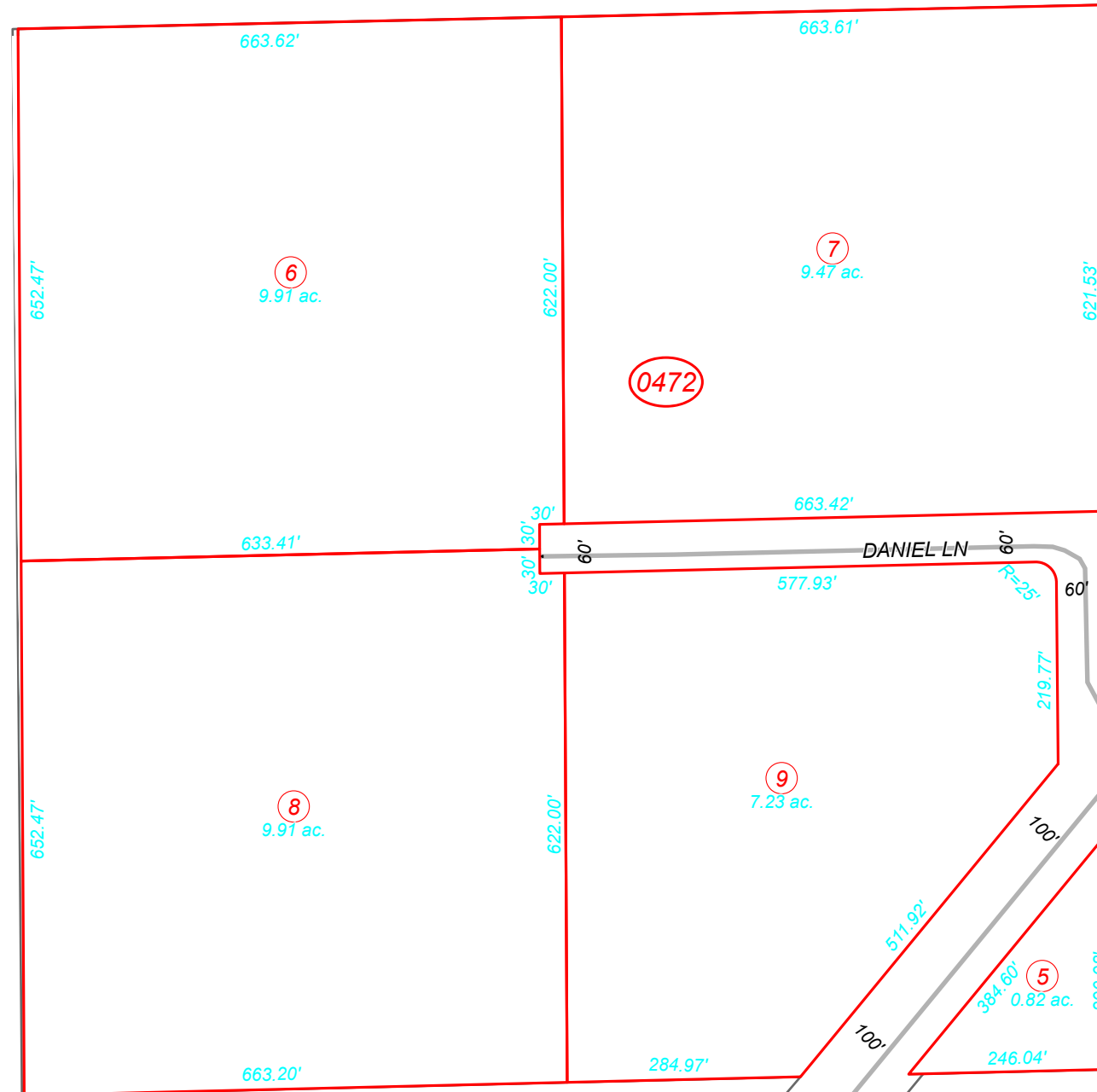


Map Prepared by:
HUMBOLDT COUNTY ASSESSOR'S OFFICE
WINNEMUCCA, NEVADA 89445

4-47
Page 2 of 4

1"=200'
M.D.B. & M.

41N39E



47
Page 1

47
Page 3

56

FERMIN CIR

SPERRY LN

STATE ROUTE 290

DANIEL LN