

HUMBOLDT COUNTY

T.38N. R.34E.

NOTE: This plat is for assessment purposes only and does not represent a survey of the lands on this plat.



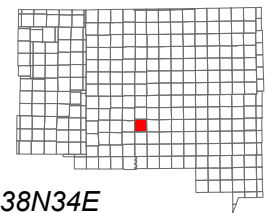
Map Prepared by:
HUMBOLDT COUNTY ASSESSOR'S OFFICE
WINNEMUCCA, NEVADA 89445

5-20

Page 1 of 2

1"=4,000'

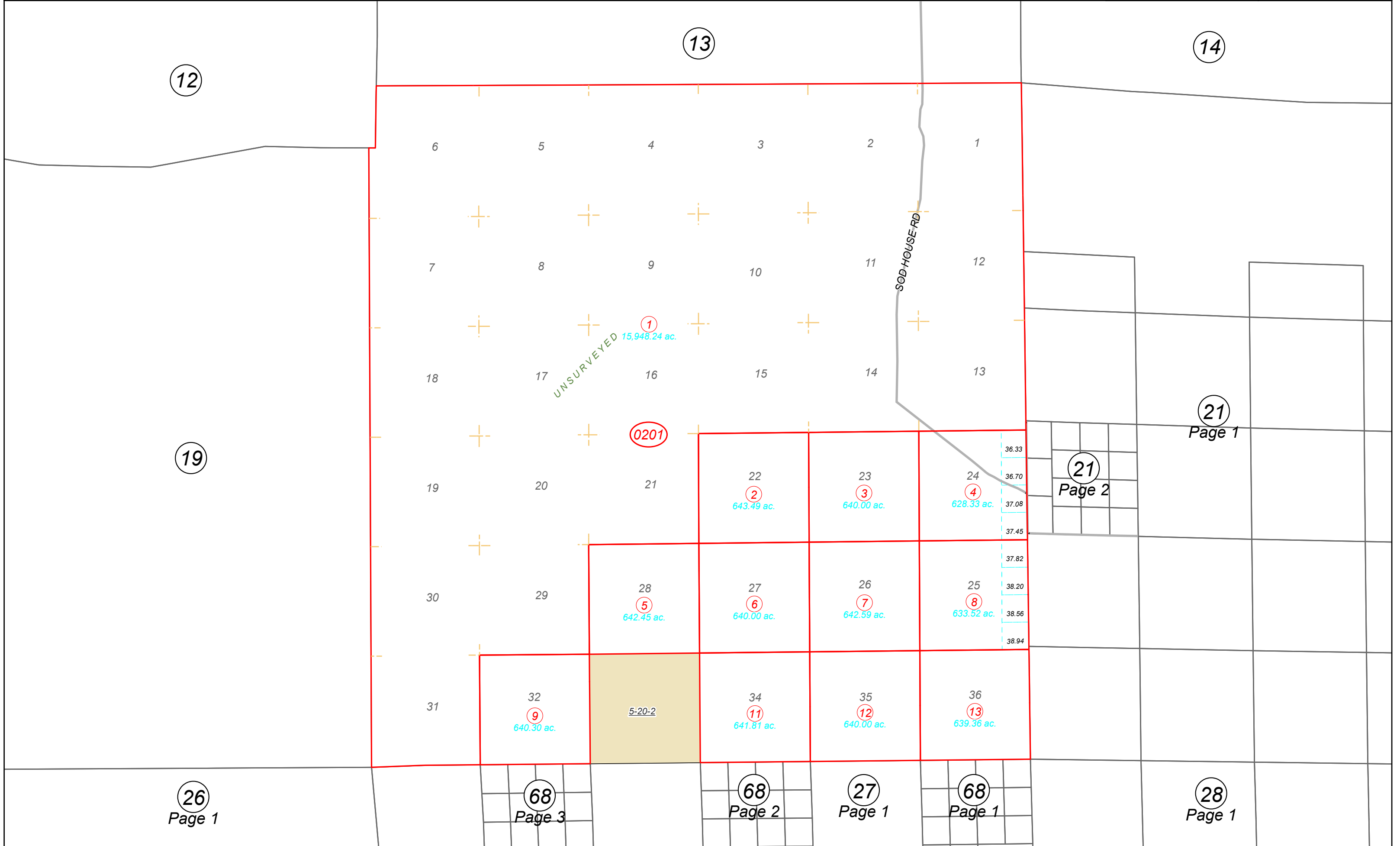
M.D.B. & M.



06	05	04	03	02	01
07	08	09	10	11	12
18	17	16	15	14	13
19	20	21	22	23	24
30	29	28	27	26	25
31	32	33	34	35	36



38N34E



UNSURVEYED 15,948.24 ac.

SOD HOUSE RD

0201

5-20-2

36.33
36.70
37.08
37.45
37.82
38.20
38.56
38.94

6 5 4 3 2 1
7 8 9 10 11 12
18 17 16 15 14 13
19 20 21 22 23 24
30 29 28 27 26 25
31 32 34 35 36

12

13

14

19

21
Page 1

21
Page 2

26
Page 1

68
Page 3

68
Page 2

27
Page 1

68
Page 1

28
Page 1

9 640.30 ac.

11 641.81 ac.

12 640.00 ac.

13 639.36 ac.

2 643.49 ac.

3 640.00 ac.

4 628.33 ac.

5 642.45 ac.

6 640.00 ac.

7 642.59 ac.

8 633.52 ac.