

HUMBOLDT COUNTY

N1/2 SEC. 23 T.39N. R.38E.

Paradise Valley Ranchos No. 1

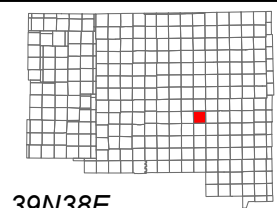
NOTE: This plat is for assessment purposes only and does not represent a survey of the lands on this plat.



Map Prepared by:
HUMBOLDT COUNTY ASSESSOR'S OFFICE
WINNEMUCCA, NEVADA 89445

6-16

1"=400'
M.D.B. & M.



| | | | | | |
|----|----|----|----|----|----|
| 06 | 05 | 04 | 03 | 02 | 01 |
| 07 | 08 | 09 | 10 | 11 | 12 |
| 18 | 17 | 16 | 15 | 14 | 13 |
| 19 | 20 | 21 | 22 | 23 | 24 |
| 30 | 29 | 28 | 27 | 26 | 25 |
| 31 | 32 | 33 | 34 | 35 | 36 |



39N38E

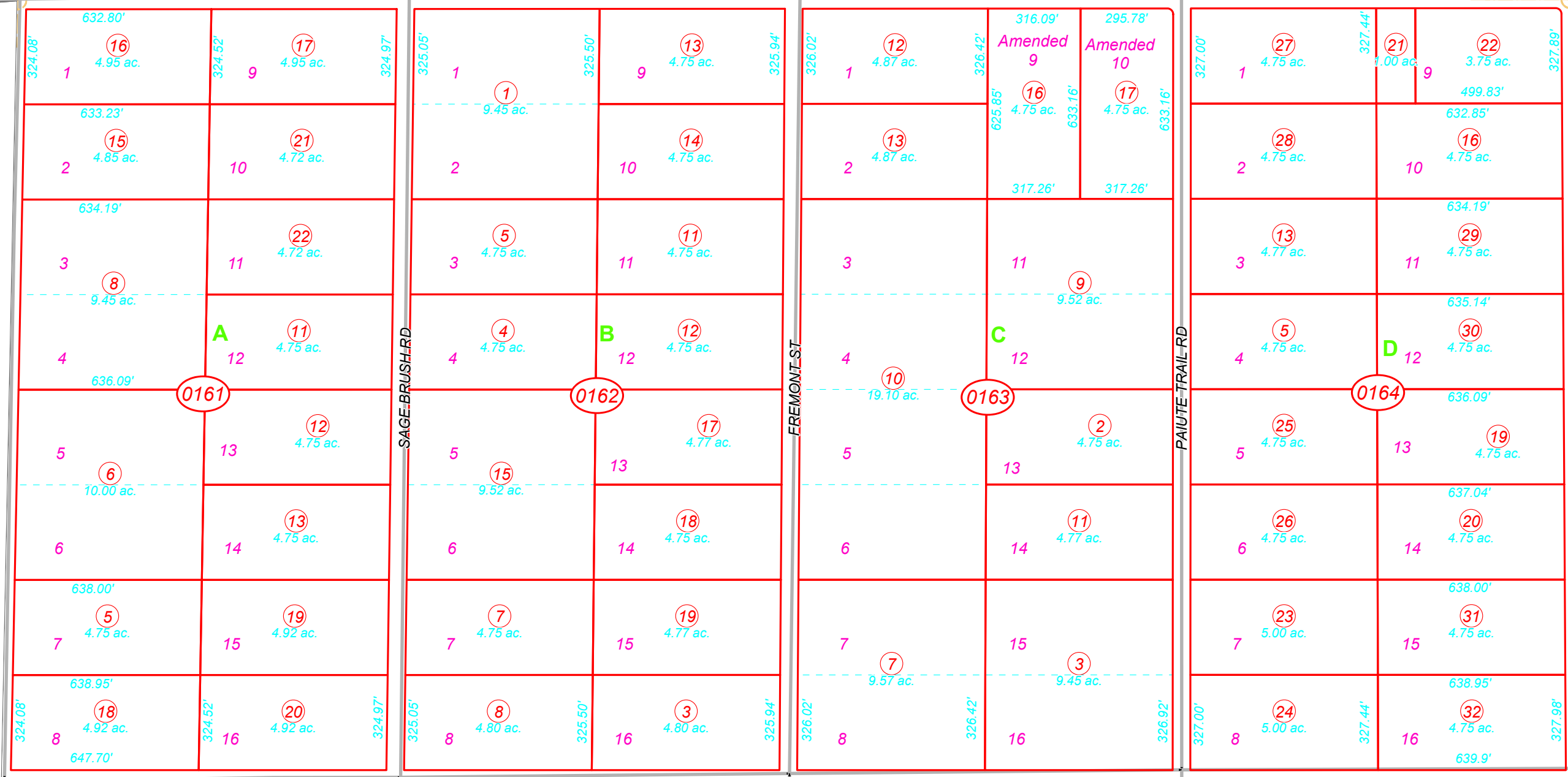
15

14

PARADISE RANCHOS DR

MOUNTAIN VIEW DR

8
Page 1



18

PIONEER DR

17