

HUMBOLDT COUNTY

S1/2 SEC. 23 T.39N. R.38E.

Paradise Valley Ranchos No. 1

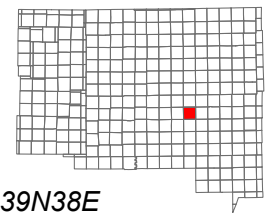
NOTE: This plat is for assessment purposes only and does not represent a survey of the lands on this plat.



Map Prepared by:
HUMBOLDT COUNTY ASSESSOR'S OFFICE
WINNEMUCCA, NEVADA 89445

6-17

1"=400'
M.D.B. & M.



06	05	04	03	02	01
07	08	09	10	11	12
18	17	16	15	14	13
19	20	21	22	23	24
30	29	28	27	26	25
31	32	33	34	35	36

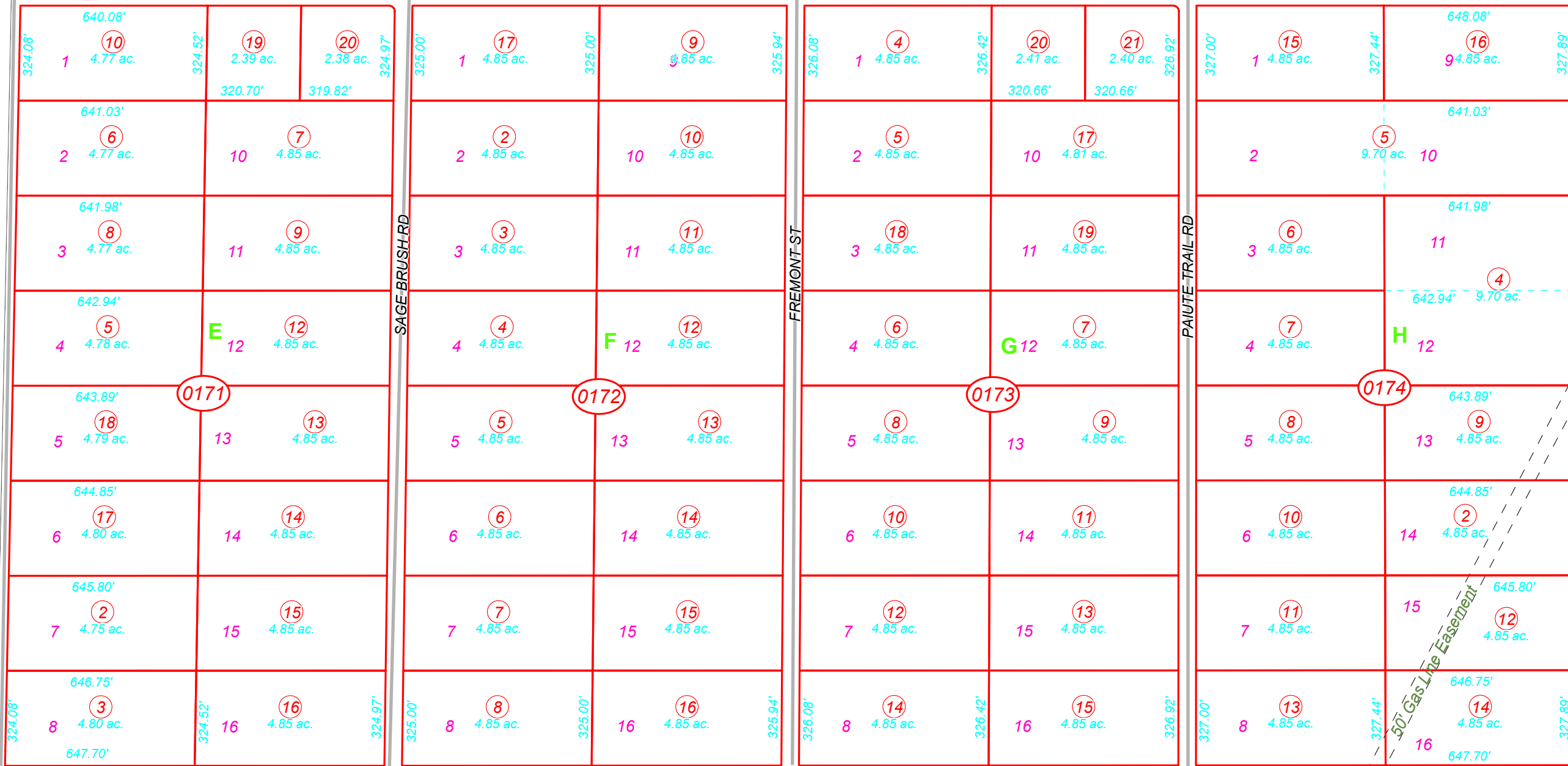


39N38E

WESTERN HORIZON DR

MOUNTAIN VIEW DR

PIONEER DR



SOUTH END DR