

# HUMBOLDT COUNTY

T.37N. R.40E.

NOTE: This plat is for assessment purposes only and does not represent a survey of the lands on this plat.



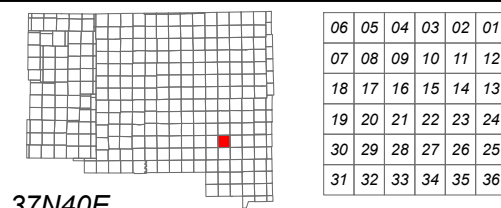
Map Prepared by:  
HUMBOLDT COUNTY ASSESSOR'S OFFICE  
WINNEMUCCA, NEVADA 89445

## 6-42

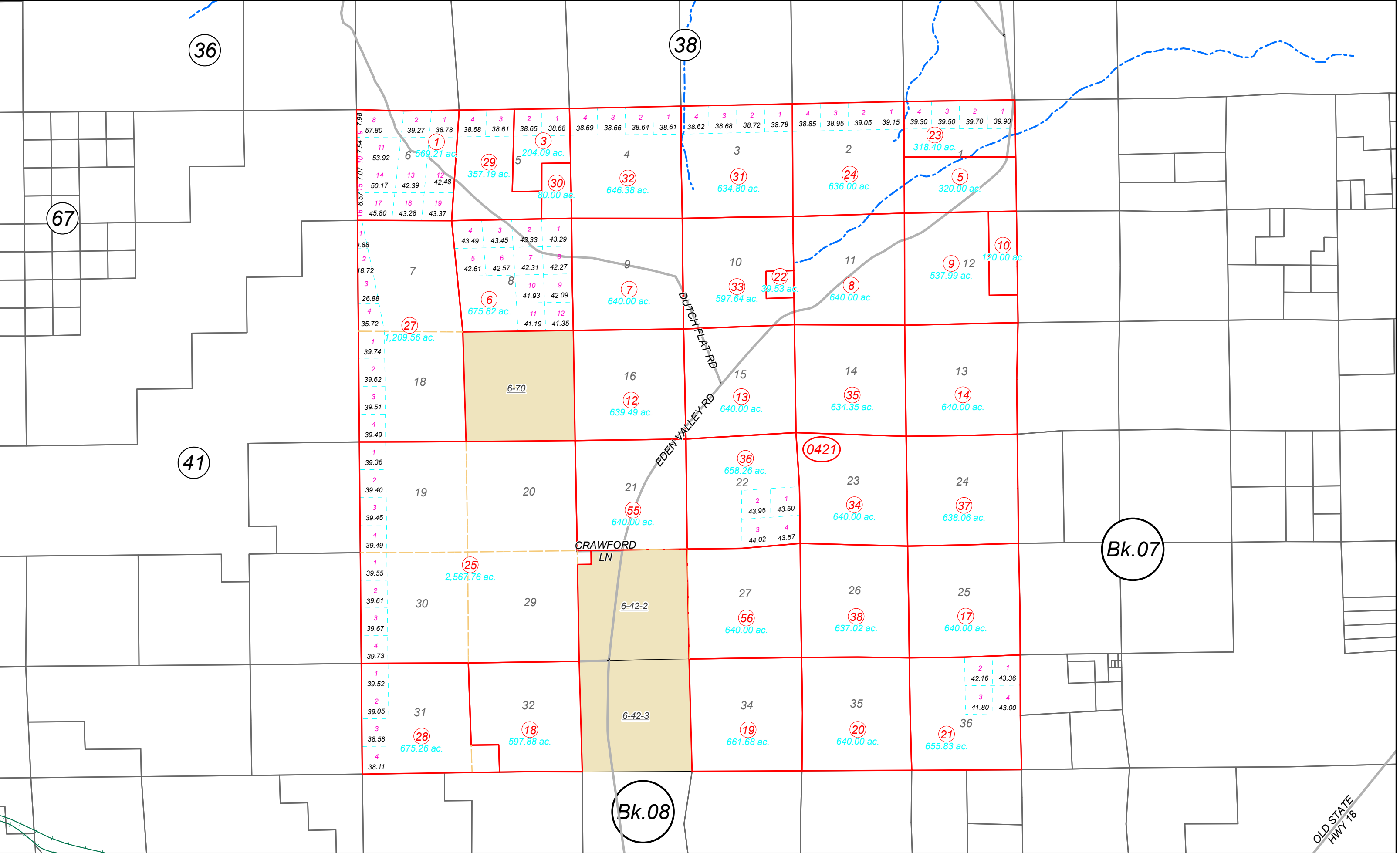
Page 1 of 3

1"=4,000'

M.D.B. & M.



37N40E



OLD STATE  
HWY 18