

# HUMBOLDT COUNTY

E1/2 SEC. 12 T.37N. R.41E.

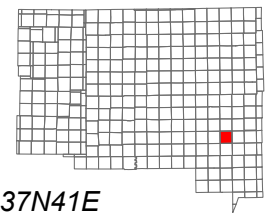
NOTE: This plat is for assessment purposes only and does not represent a survey of the lands on this plat.



Map Prepared by:  
HUMBOLDT COUNTY ASSESSOR'S OFFICE  
WINNEMUCCA, NEVADA 89445

7-17

1"=600'  
M.D.B. & M.



06	05	04	03	02	01
07	08	09	10	11	12
18	17	16	15	14	13
19	20	21	22	23	24
30	29	28	27	26	25
31	32	33	34	35	36

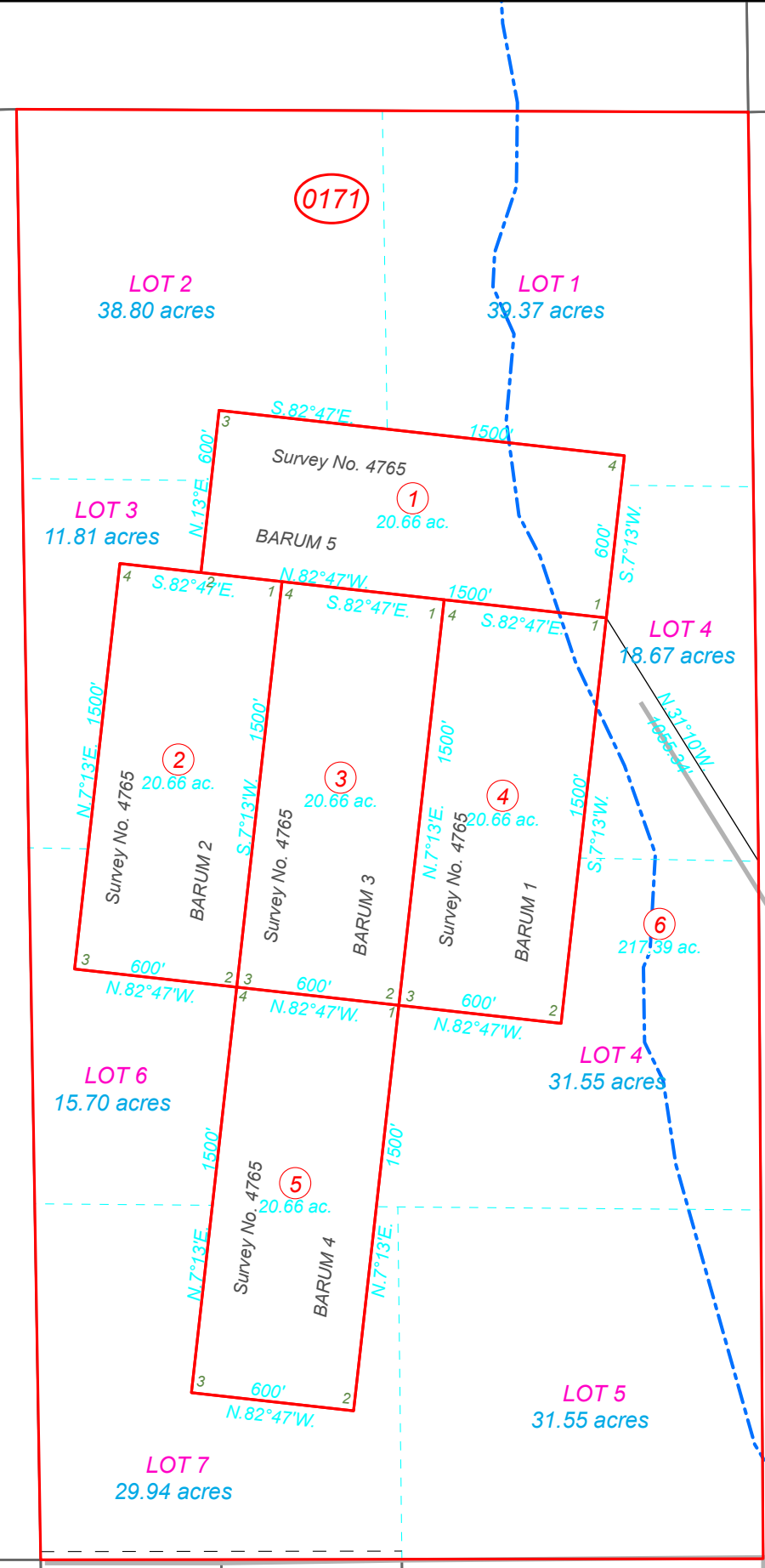


37N41E

16  
Page 1

18

72



RAVEN HILL LN

BLUE BELL MINE RD