

# HUMBOLDT COUNTY

T.32N. R.42E.

NOTE: This plat is for assessment purposes only and does not represent a survey of the lands on this plat.



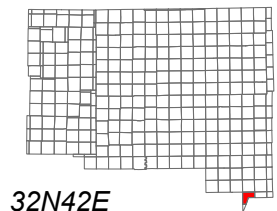
Map Prepared by:  
HUMBOLDT COUNTY ASSESSOR'S OFFICE  
WINNEMUCCA, NEVADA 89445

## 7-48

Page 1 of 3

1"=4,000'

M.D.B. & M.



06	05	04	03	02	01
07	08	09	10	11	12
18	17	16	15	14	13
19	20	21	22	23	24
30	29	28	27	26	25
31	32	33	34	35	36



32N42E

44

45  
Page 1

46  
Page 1

49

51

UNTY

LANDERCOUNTY

LANDERCOUNT

PERSHINGCOUNTY

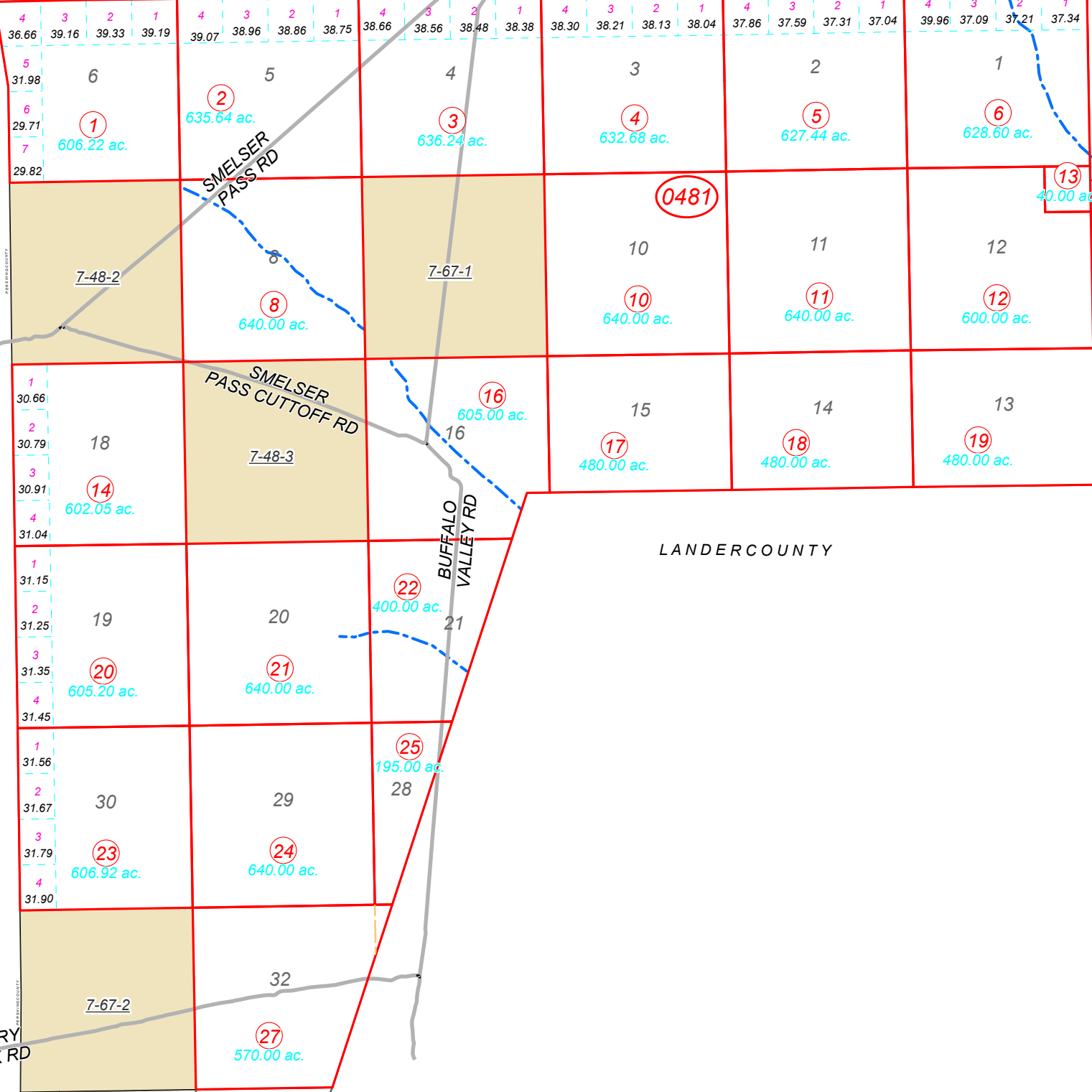
CHERRY CREEK RD

BUFFALO VALLEY RD

SMELSER PASS CUTOFF RD

SMELSER PASS RD

45



7-48-2

7-67-1

7-48-3

7-67-2

0481